



Peter Barry
working harder for you

Tel: 020 8360 4777
www.pbea.co.uk



Trinity Avenue, Enfield, EN1 1HW

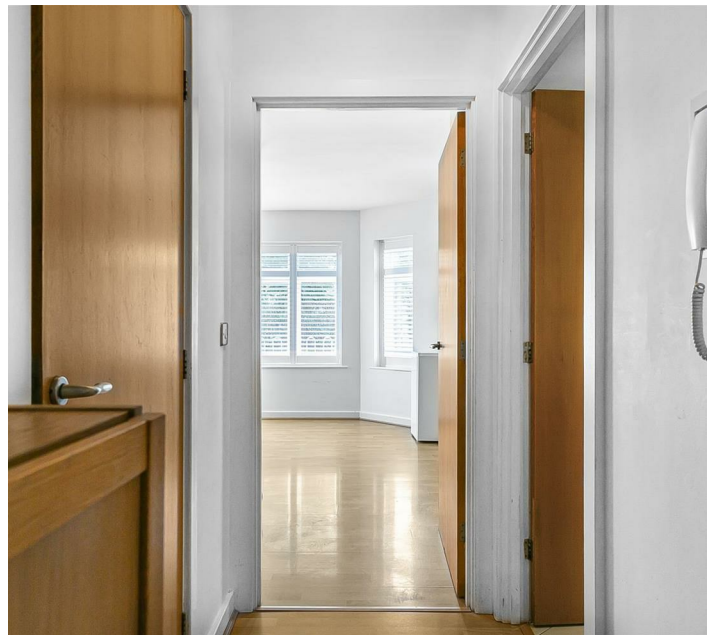
Guide Price £350,000 to £360,000

Peter Barry are pleased to offer this modern but characterful two double bedroom ground floor apartment with secure private allocated parking.

This great property is literally a stones throw from Bush Hill Park mainline station that travels into London's Liverpool Street.

- Chain free
- Close to local shops
- En suite to master bedroom
- New lease on completion
- Opposite the station
- Two good size bedrooms
- Secure parking
- Ground floor flat

£350,000



Energy Efficiency Rating		Current	Potential
<i>Very energy efficient - lower running costs</i>			
(92 plus) A			
(81-91) B			
(69-80) C		74	77
(55-68) D			
(39-54) E			
(21-38) F			
(1-20) G			
<i>Not energy efficient - higher running costs</i>			
England & Wales		EU Directive 2002/91/EC 